

LAND AVAILABLE

4800 South Garnett, Tulsa, Oklahoma

FOR SALE

1 to 6.4 Acres Available

Commercial Tract(s)
Ready for Development

Adjacent to new \$7.5 million Tulsa Bone & Joint Outpatient Hospital

Traffic Counts

Garnett Road - 16,000 cpd
51st Street - 17,900 cpd
Hwy 51/ B.A. Expy - 83,400 cpd
Highway 169 - 108,600 cpd

SIZE 1 to 6.4 Acres

ZONING PUD 312-A, Area F

TOPOGRAPHY Flat

PERMITTED USES Office, Hotel, Restaurant, Shopping Goods and Services, Automotive Uses, Studios and Support Scientific Research

BUSINESSES IN THE IMMEDIATE VICINITY

Cox Communications
US Cellular
Urological Specialists
Tulsa Bone & Joint
Garden Ridge
4500 Exchange Offices
Exchange Centers East & West Offices



TANDA FRANCIS
Office - 918.394.1000
Fax - 918.394.1001
Cell - 918.630.9991
tanda@beaconcommercial.com

BEACON
COMMERCIAL GROUP, LTD
8242 South Harvard, Suite I
Tulsa, OK 74137

Information contained herein is believed to be accurate but is not warranted as to accuracy and may change or be updated without notice. Seller or landlord makes no representation as to the environmental condition of the property and recommends purchaser's or tenant's independent investigation.

LAND AVAILABLE

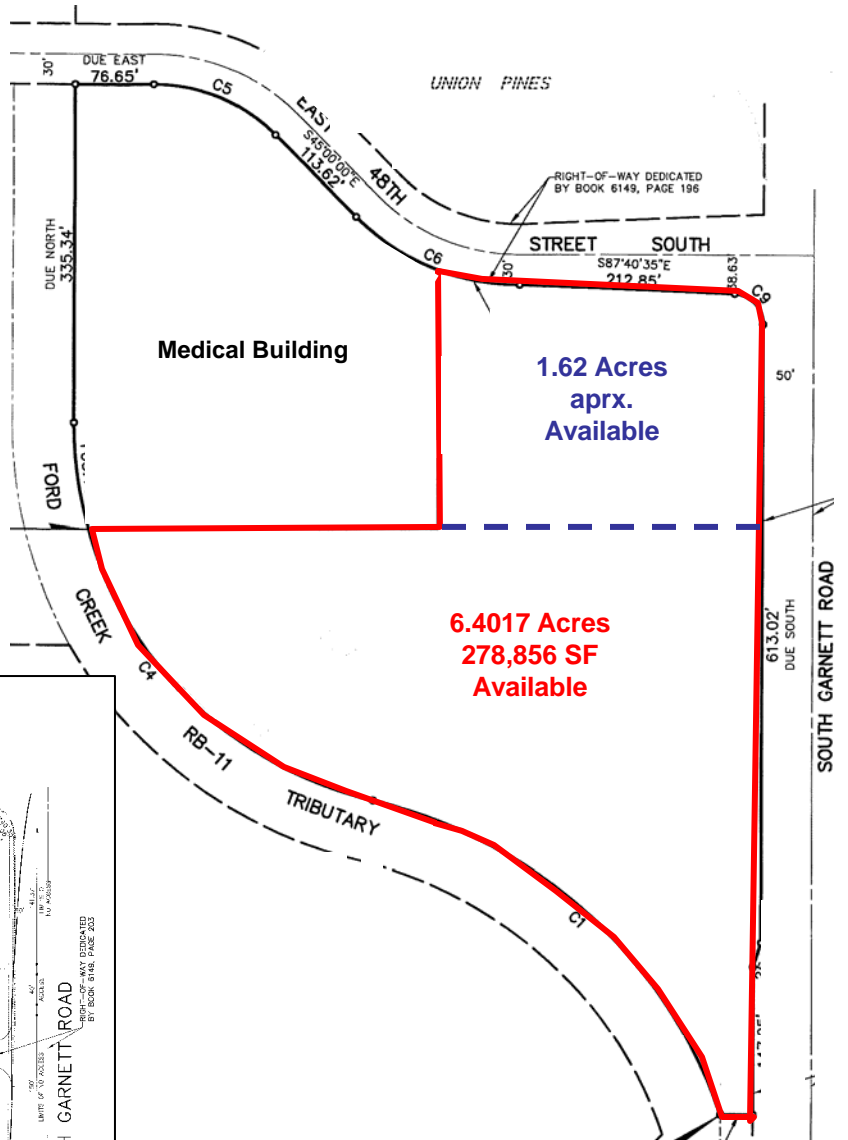
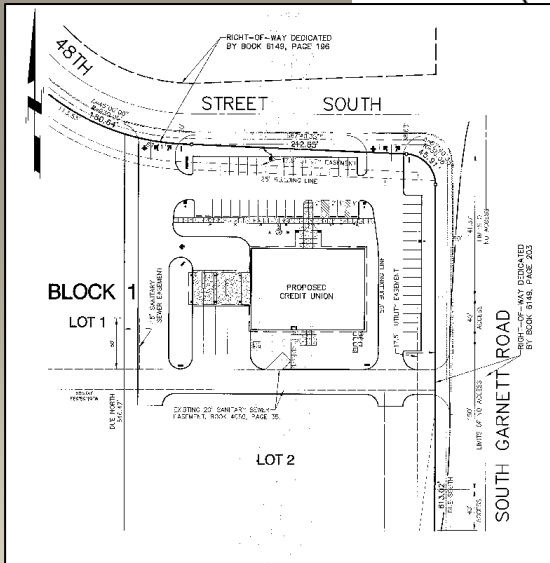
4800 South Garnett, Tulsa, Oklahoma

FOR SALE

CONCEPTUAL SITE PLAN

1.0 Acres to
6.4 Acres Total

Conceptual Site Plan
1.62 Acres



TANDA FRANCIS

Office – 918.394.1000

Fax – 918.394.1001

Cell – 918.630.9991

tanda@beaconcommercial.com

Information contained herein is believed to be accurate but is not warranted as to accuracy. Seller or landlord makes no representation as to the condition of the property and recommends purchaser's or tenant's independent investigation.