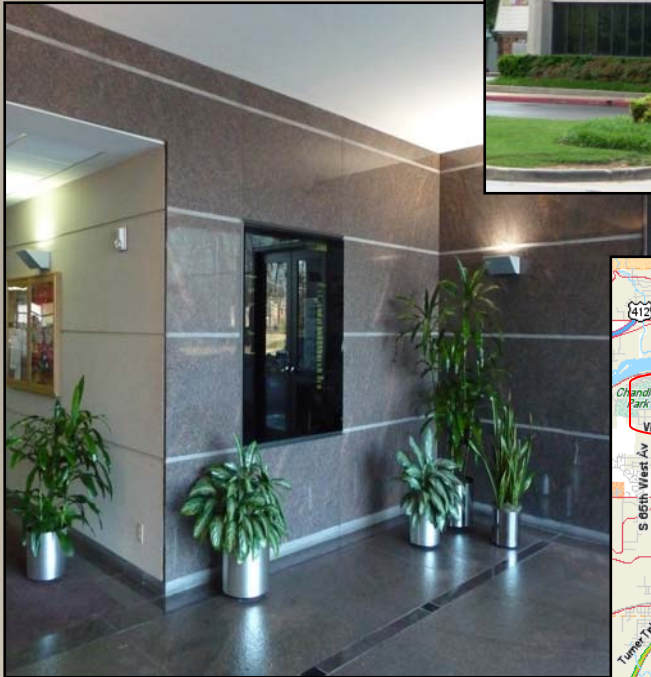


# RICH & CARTMILL BUILDING

2738 East 51<sup>st</sup> Street, Tulsa, Oklahoma

## For Lease

- 1,684 SF Available  
2<sup>nd</sup> Floor
- 359 to 1,644 SF,  
Available 1<sup>st</sup> Floor
- Rent Rate - \$12.50/SF
- Common Area  
Conference Room



**BEACON**  
COMMERCIAL GROUP, LTD  
8242 South Harvard, Suite I  
Tulsa, OK 74137

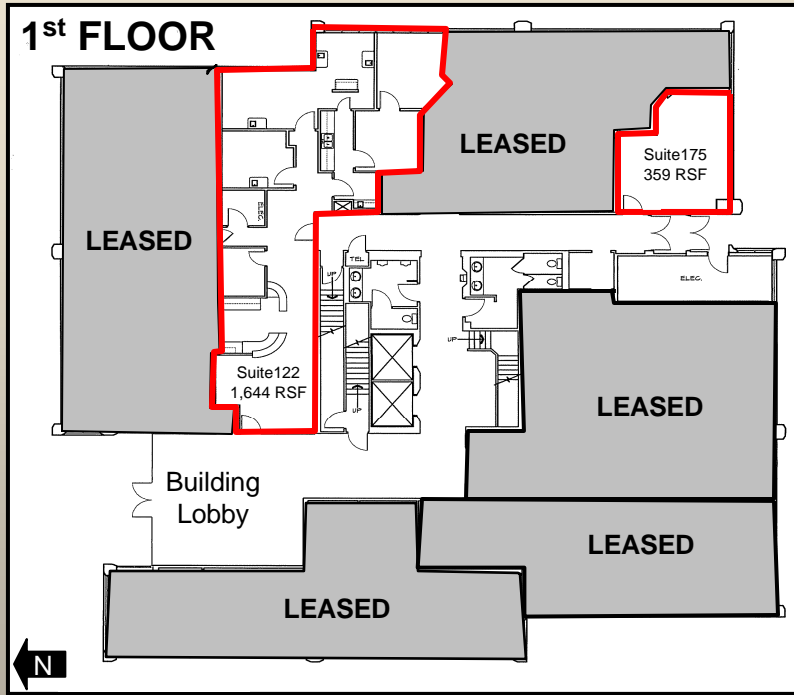
**TANDA FRANCIS**  
Office – 918.394.1000  
Fax – 918.394.1001  
Cell – 918.630.9991  
tanda@beaconcommercial.com

Information contained herein is believed to be accurate but is not warranted as to accuracy and may change or be updated without notice. Seller or landlord makes no representation as to the condition of the property and recommends purchaser's or tenant's independent investigation.

# RICH & CARTMILL BUILDING

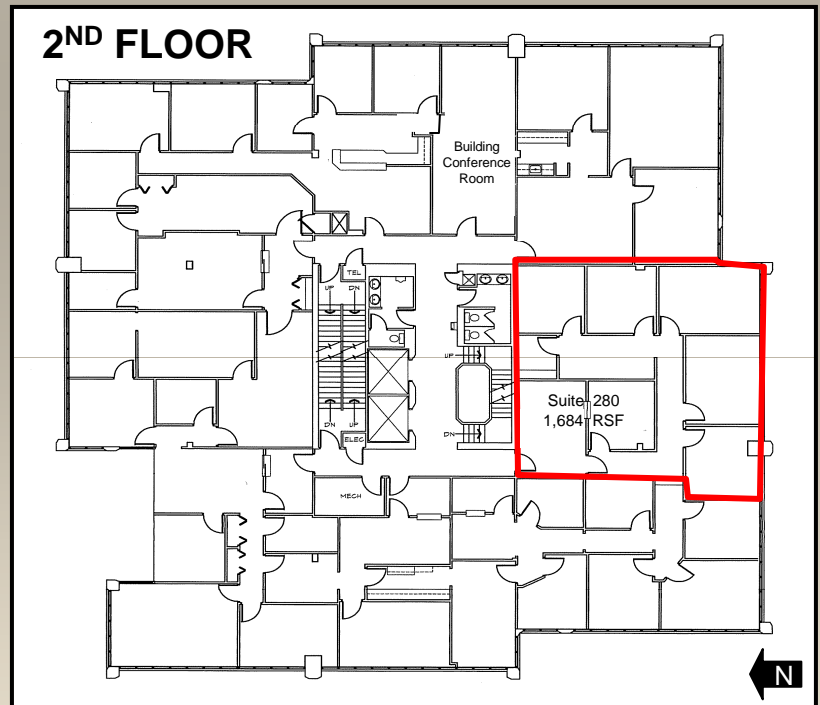
2738 East 51<sup>st</sup> Street, Tulsa, Oklahoma

## For Lease



**1<sup>st</sup> Floor**  
**Suite 122 - 1,644 RSF Available**  
**Suite 175 - 359 RSF Available**

**Suite 280 – 1,684 RSF**



**BEACON**  
COMMERCIAL GROUP, LTD  
8242 South Harvard, Suite I  
Tulsa, OK 74137

**TANDA FRANCIS**  
Office – 918.394.1000  
Fax – 918.394.1001  
Cell – 918.630.9991

[tanda@beaconcommercial.com](mailto:tanda@beaconcommercial.com)

Information contained herein is believed to be accurate but is not warranted as to accuracy and may change or be updated without notice. Seller or landlord makes no representation as to the condition of the property and recommends purchaser's or tenant's independent investigation.